

AFS™

ADVANCED FARMING SYSTEMS

AFS



AFS ACCUGUIDE™





AFS™ – THE TOOLS FOR MODERN FARMING COMPACT, CAPABLE COMPETITIVE!

CASE IH ADVANCED FARMING SYSTEMS (AFS™) PAY FOR THEMSELVES. TAKE ADVANTAGE OF HARDWARE AND SOFTWARE – ALL-IN-ONE AND FROM A SINGLE SOURCE: THE PERFECT SOLUTION FOR YOU

Case IH AFS stands for an extensive range of practice-oriented solutions that help you farm and manage your fields more efficiently than ever before. Take advantage of what is doubtlessly the most important advancement in modern agriculture since the start of mechanisation, and benefit from increased control, productivity, efficiency and precision. Case IH AFS solutions are logical, easy to use and intuitive, and they become second nature in next to no time – just like driving one of our tractors. This is how we understand the demands of modern farmers.

ON THE RIGHT TRACK – WITH CASE IH AFS

Even though good things usually come in threes, Case IH AFS solutions have the extra add-on and come in fours! Our AFS solutions offer the keys to success throughout your entire production cycle and provide a clear overview – year in, year out.

- **Ensure optimum management:** Control and manage vehicles, implements and data via integrated touch-screen monitors which are 100% compatible and exchangeable throughout the entire Case IH fleet.
- **Advance straight ahead:** Straight lines in the field save you time and money by making the most efficient use of all resources – machines, workforce, fuel and all means of production such as seeds, fertilisers and crop protection products.
- **Today for tomorrow:** Stay a decisive step ahead with AFS Farm Management Software. Make your future-oriented decisions on the basis of solid facts – and nothing else.
- **AFS Connect™ Telematics:** Monitor and control the operation of your machines from the desk in your farm office. Improve logistics processes and maximise performance. Take full advantage of Case IH AFS Connect technology – with a data connection in real time.

AFS™ – RETURN ON INVESTMENT

USE PRECISION AND KNOWLEDGE TO INCREASE YOUR REVENUES

When you make an investment in AFS technology, you will optimise the profitability of your business. Ultimate accuracy, as well as optimum fleet management and intelligent use of data simply serve one purpose: to maximise your return on investment. Whilst reducing overlaps and bad spots, thus saving precious time, fuel and farm inputs, you can also apply variable rates of fertilisers or plant protection products according to field and yield maps, or avoid costly downtimes by means of an intelligent and efficient fleet management.

THE INVESTMENT PAYS OFF IN FULL!

A small and rather conservative calculation highlights your benefit: Take a sprayer with a 21m boom, under normal circumstances your effective usable width will be around 20.05m. With an RTK accuracy of +/- 2.5cm, however, the usable width increases to 20.97m, thus allowing for savings of 4.5%. By means of the Case IH precision payback or ROI calculator at http://www.caseih.com/en_gb/Products/AFS/Pages/AFSCalculator.aspx, you can easily calculate the return on investment that you can achieve by using Case IH AFS solutions. Enter the specifics of your operation and calculate your estimated savings with precision farming tools. You will be amazed at the difference that Case IH AFS can make in reduced input costs and time saved.

Your fast way to the ROI calculator:

Simply use your smartphone and scan the QR code.



EXAMPLE:

Production costs wheat	€/ha
Seeds	100.00
Fertilisers	210.00
Plant Protection Products	175.00
Other costs (fuel, allowance for depreciation, labour)	352.00
Production costs	837.00
RTK +/- 2.5cm	
4.5% reduction of costs	
Savings: 1 ha of wheat / season	37.66 €
Savings: 95 ha of wheat / season	3,577.70 €



PRACTICAL EXPERIENCES OF OUR CUSTOMERS

HIGH-TECH REMOTE CONTROL IN AGRICULTURE



In 'Güterdirektion Liechtenstein', located in the 'Weinviertel' of Lower Austria, first steps in precision agriculture were taken ten years ago.

"Even though being uncharted waters for us back then, this looked promising to us", says Werner Pfeifer, responsible for the vehicle fleet of this 3,000 hectare estate in Rabensburg and Wilfersdorf at the time.

Many different systems of various brands have been tested ever since. At present, however, with the Magnum 335 and the Quadtrac 535, as well as two combines and four tractors of other brands, they use the satellite-based Case IH AFS-AccuGuide™ auto-guidance solution, i.e. a fully automatic guidance system via the hydraulic steering. Combined with yield mapping, this provides relevant and important data for the application of seeds, fertilisers and plant protection products.

Werner Pfeifer, Güterdirektion Liechtenstein, Austria

GUIDANCE SYSTEM PROVEN IN THE FIELD ON THE WAY TO CONTROLLED TRAFFIC

... For Hermann Kästle - a farmer in Steinheim near Dillingen in the Danube valley – the reasons for using an automatic steering system on his Case IH tractors are many. In particular the capability of increasing the accuracy of work processes, improving driving comfort and applying sprays and fertilisers much more precisely - i.e. lowering operating costs - encouraged the young farmer to invest in an automatic steering system. He decided to retrofit an EZ-Steer from Case IH in combination with an EZ-Guide FM 750™, which he can use on his Puma 230 CVX, 155 CVX or Maxxum 140 as required. The newest tractor, a Puma 230 CVX, was delivered factory fitted for use with the steering system ...



Hermann Kästle, farmer in Steinheim near Dillingen, Germany

AFS IN ACTION THE PRECISE DRIVER



... One of the main concerns of Herbert Geisen and his team is to lower operating costs and increase efficiency. That is why some years ago he equipped his complete fleet of Case IH tractors with automatic steering systems. "The advantages are obvious: thanks to the automatic guidance system we achieve a much higher output – sometimes up to 20 percent higher productivity in our fields. On top of that there are the savings in plant protection sprays and fertilisers, as well as taking the stress off the driver," he says. The latest application for the AFS™ system is potato planting. "The Autopilot™ system steers the tractor to an accuracy of 2.5 centimetres with the help of the RTK correction signal. The most important thing during potato planting is that the planter remains exactly on track. We have looked at different technical solutions and decided to use a planter with active steering. All data are controlled using an FM 1000™ monitor with TrueTracker™, the active control system in the Magnum cab".

Herbert Geisen, farmer in Münstermaifeld, Germany

ADVANTAGES ACHIEVED WITH ACCUGUIDE



.... Søren Andersen about AccuGuide: "I see a number of advantages with this system, such as repeatable driving patterns and overall savings. With this system we can lay down fixed pass patterns. I have read that experiments abroad have shown that this system brings higher yields and reduces the power requirement for soil cultivation".
... "You save time, fuel, power and use fertilisers and pesticides more effectively", states Søren Andersen ...

- "We can work more efficiently because now we can concentrate on the seed drill instead of on steering in the right direction".
- "We can drive in the same tracks every year, which causes less soil compaction and also increases yield as a result".

Tage and Søren Andersen, Spøttrup, Denmark

AN INVESTMENT WHICH PAYS OFF: STAY ON THE RIGHT TRACK FOR TOP EFFICIENCY

Staying in straight lines pays off quickly, with lower fuel costs, less input of seeds, fertilisers and plant protection products – and with less of your precious time being required to get the job done! Just select the level of precision that best suits your needs. Installing a GNSS (Global Navigation Satellite System) antenna on your machine gives you access to our Advanced Farming Systems and thus to track guidance systems, telematics, automatic section control, harvest mapping and much more.

ENTRY-LEVEL EGNOS SIGNAL – EGNOS signals are broadcast by three geostationary satellites which allow for a track-to-track accuracy of about +/- 20cm. They are generally available without license cost and provide sufficient guidance for simple applications such as lightbar systems and can be used for the application of fertilisers or crop protection products.

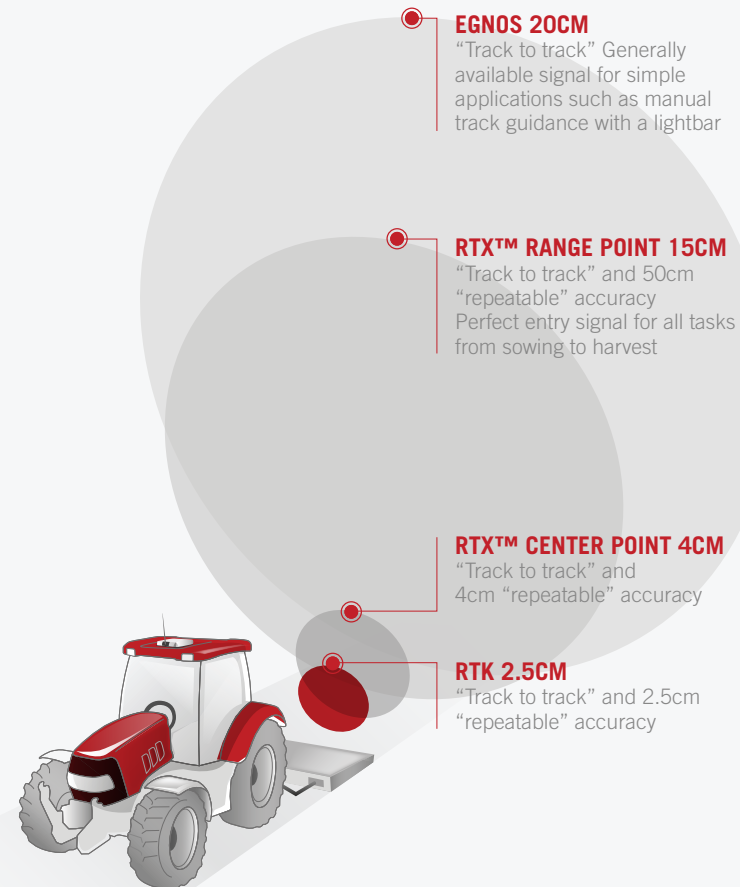
RTX™ RANGE POINT– Satellite-based correction signals allow for an improved accuracy of GPS signals. The RTX RANGE POINT service is exclusively available for AFS receivers. The system provides a 15cm pass-to-pass and 50cm repeatable accuracy within 5 minutes. GPS and GLONASS signals are available without cost, and together with the subscription based RTX range point system it bridges up to two minutes of time-outs. It is the high-performance entry level signal for all applications from seeding to harvest.

RTX™ CENTER POINT – RTX CENTER POINT correction signals are already very close to the Case IH top-end guidance systems and offer a 4cm pass-to-pass and 4cm repeatable accuracy. To achieve its maximum accuracy, the system needs about 30 minutes convergence time. Subscription based RTX CENTER POINT features free GPS and GLONASS signals as well as quick re-start technology, and bridges two minutes of time-outs.

AUTOMATIC DRIVING IN THE RTK-NETWORK – RTK (Real Time Kinematic) is the top-end technology that delivers a reliable 2.5cm pass-to-pass and year-after-year accuracy. The Case IH RTK network is fully functional across the country. The ultimate precision for your field work is achieved with an additional wireless correction signal from a mobile tripod or via a mobile communications network, with the modem fixed to the tractor and a range of up to 30km.

Depending on topographical conditions, Case IH transmits RTK signals via GSM mobile network or directly via radio. The use of GLONASS satellites in addition to GPS satellites allows for effective protection against a potential lack of coverage that might be caused by environmental conditions. Thanks to the xFill technology, which is included as standard in all Case IH RTK solutions, signal losses can be bridged for up to 20 minutes as soon as the machine starts up. Just keep going without interruption – and maintain ultimate precision.

It is your perfect guidance solution for row crops, tillage operations and the application of crop protection products. The signal can be provided to and used by several of your tractors at the same time.



ADVANTAGES

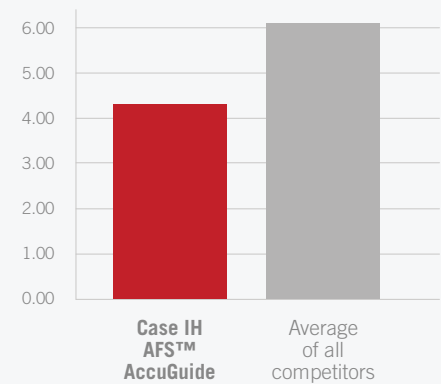
- Entry level Egnos signal without license costs
- The perfect signal RTK Network for repeatable accuracy of 2.5cm
- Maximum stability through the use of GLONASS satellites in addition to GPS satellites
- Fail-save thanks to X-Fill technology which covers signal losses for up to 20 minutes



The precision and handling of automatic steering systems on farming vehicles were assessed in the DLG focus test **“Automatic Steering Systems”**.

Average precision in cm

(taking into account machine-dependent variations)

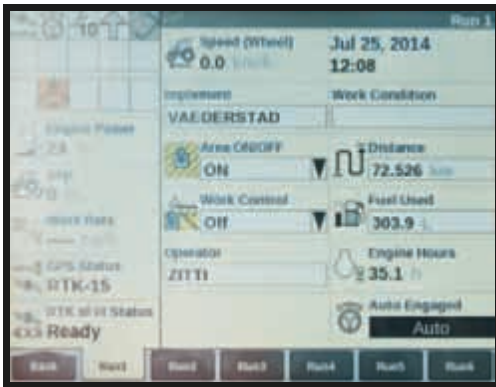


Summary:

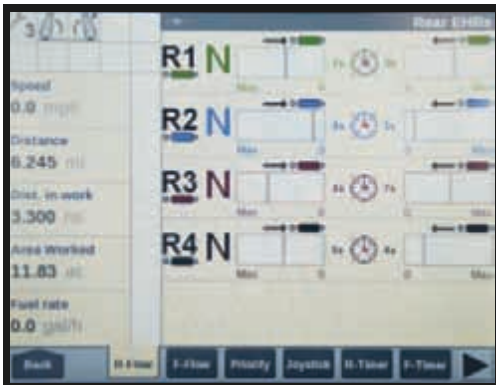
“...The approved steering system from Case IH offers a system precision range of 3-5 when used with a local RTK station...”

For the full test, see www.dlg-test.de/tests/6156F.pdf or simply use your smartphone to scan the QR code.





Performance monitoring.



Machine settings.



ISOBUS compatibility.



AFS™ PRO 700 MONITOR: ENJOY SIMPLIFIED FARMING OPERATIONS

The AFS™ Pro 700 touch-screen is factory installed and ready to go. It is a single, customisable, intuitive, easy-to-read display to be used for your whole Case IH fleet, i.e. tractors, combines and balers, to control and monitor key functions and track important information. You can even take your AFS Pro 700 display from your Case IH machinery to other types of equipment for ISOBUS control or video monitoring, no matter what the colour may be; the integrated platform allows for compatibility with all equipment in your farming operation. Better still, the same is true for systems from your external suppliers such as co-ops, crop advisers, or financial advisers.

KEY FEATURES INCLUDE:

- **Performance monitoring and recording:** overall performance, performance per day or for each job. All data from the AFS monitors can be saved to a USB stick for analysis at your farm office if required.
- **Vehicle settings:** a series of AFS screens allow you to fine-tune machinery and implement settings. It is easy to set flow rates and timers for each of the remote valves, providing an excellent overview of the whole set up of your tractor. The same is true for Automatic Crop Settings (ACS), header adjustments and settings of other important parameters on your combine.
- **Hitch notebook:** this function enables you to save settings for each implement according to working conditions. Next time you attach the plough, for example, just open the notebook, choose the right set-up and off you go.
- **Full ISOBUS compatibility:** hook up any compatible machine to display its user interface on the AFS monitor and operate the machine easily and interactively by pressing the control buttons on the AFS monitor. Separate control pendants or cables inside the cab are no longer needed.
- **Video input:** display a live video feed from a camera positioned at the rear end of a loader wagon or look into the trailer with a camera mounted on the unloading auger of your combine; you can monitor what is going on without having to take your eyes off the work area in front of you.
- A variety of vehicle guidance solutions is available to match your needs for precision. A fully automated and integrated solution, which is factory installed, gives you the pinpoint accuracy you need for high value crops. However a simple plug and play lightbar steering kit can also be installed – whatever suits you best.



AFS PRO 700 TOUCH-SCREEN MONITOR

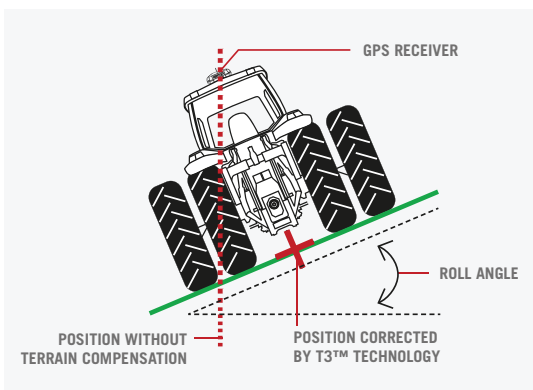
Easy, intuitive and efficient operation of your fleet: Enjoy enhanced vehicle control and additional productivity with programmable functions and settings, as well as notebook and ISOBUS compatibility.



Improve comfort by reducing operator demands.



Mechanical row guidance in combination with GPS signals.



T3™ enhanced terrain compensation technology.

EASY TO USE AND EFFICIENT: FACTORY-INSTALLED AUTOGUIDANCE

Integrating guidance systems into our tractors and Axial-Flow® combines right from the start ensures extensive factory testing and quality control. Factory-installed AFS™ autoguidance systems offer unsurpassed reliability and convenience, providing a year-to-year and pass-to-pass accuracy which is as tight as plus or minus 2.5cm. Guidance solutions from Case IH such as AFS AccuGuide™ and AFS RowGuide™ can be tailored to your needs and markedly increase the accuracy, efficiency and productivity of your operation.

TILLAGE

Use AFS AccuGuide during tillage operations with implements such as a cultivator or disk harrow to reduce skips and overlaps, map the ground you have worked, and save fuel and labour costs. AFS AccuGuide simplifies your operation and you will be able to add extra working hours to your day if need be, without extra fatigue.

PLANTING & SEEDING, SPREADING & SPRAYING

Neat straight rows have always been appreciated by farmers. Proceed one step further and protect your soil with controlled traffic whilst planting your seeds within 2.5cm of this year's rows in 95 percent of the time. AFS AccuGuide helps you to achieve straight and repeatable rows with higher speed and efficiency when planting or seeding with fully integrated, hands-free assisted steering. Enjoy saving on seeds, fertilisers and chemicals whilst minimising skips and overlaps.

HARVESTING

In conjunction with AFS AccuGuide, AFS RowGuide provides accurate, hands-free assisted steering during corn harvest to reduce operator fatigue on long working days. Two mechanical touch sensors, mounted on the dividers of the corn-header, sense row positions and provide guidance together with the GPS signal. You can rest assured that your combine will stay right on course on each single pass.

OPTIMISE YOUR OPERATION

Compensate for sideward slip and potential loss of accuracy during operations on sloping fields by means of a T3™ navigation controller with enhanced compensation technology. Keep your line straight – wherever you go.





DISPLAYS FAST, MODERN, USER-FRIENDLY

The new XCN-2050 display system is characterised by a host of innovations and new functions. For the first time, the display features a multi-touch surface for convenient fingertip control. The Android operating system also allows you to install additional software to enhance the functional scope. Thus you can add farming applications such as a lightbar, for example, and also display helpful agricultural information – from weather forecasts and precipitation data to site-specific management information.

THE XCN-2050 DISPLAY OFFERS:

- High-resolution 30cm touch-screen
- Crystal-clear display of field maps – supported by aerial views, tracks, field borders and fertiliser maps
- Android-based operating system for the latest graphics and menu navigation
- External upgrade module for immediate connection of accessory components
- Compatibility with integrated and assisted steering systems
- Accuracy of 2.5 to 15cm
- Internal 32 GB flash hard drive
- Integrated HD video camera on the front of the display



KEEP EVERYTHING IN VIEW TOUCH-SCREEN MONITORS THAT SUIT YOUR NEEDS



CASE IH FM-1000™

Benefit from the ultimate precision for your tractor and the attached implement. The FM-1000™ offers optimum performance and reliability with the industry's leading integrated GPS + GLONASS dual frequency receiver. The 30.73cm touch-screen monitor offers best visibility from a bright and large screen that can be switched between day and night mode. You can toggle between plan and 3D views or zoom in and out just with the tip of your finger. In addition to mapping options, fieldfinder technology and USB flash drive, this screen also features integrated radio options for RTK accuracy, four ports / video inputs and a GPS data output – so you can supply GPS position data to your combine display for yield monitoring for example.



CASE IH FM-750™

The Case IH FM-750™ system is ready to use and easy to install. The 20cm 16:9 touch-screen display is the starting point for the application of the ultimate Advanced Farming Systems, as packages for automatic steering and section control can easily be integrated. On this display, you can immediately see your current location in the field as well as the area covered so far with either plan or 3D views. Switch between day and night mode according to working and light conditions, mark and localize obstructions in the field and enjoy easy navigation to the next pass using the SwathFinder assistant. Loudspeaker / buzzer, Fieldfinder technology, 27 LED display, USB flash drive, radar speed display, RTK radio option and two video / camera inputs are just some of this monitor's useful features.



EZ-GUIDE® 250

The EZ-Guide® 250 is the entry-level track guidance system with a lightbar. This Case IH system has an intuitive user interface and is ready for operation on delivery. It allows for plan and 3D views on the 11cm colour screen and reveals your position in the field at a glance. Features include a day or night mode for excellent visibility under all circumstances, marking and locating of in-field hazards, SwathFinder assistance, USB flash drive, radar speed output and GPS data output. The EZ-Guide 250 is a logical first step in the world of guidance systems and can be fitted to any brand of tractor any time.





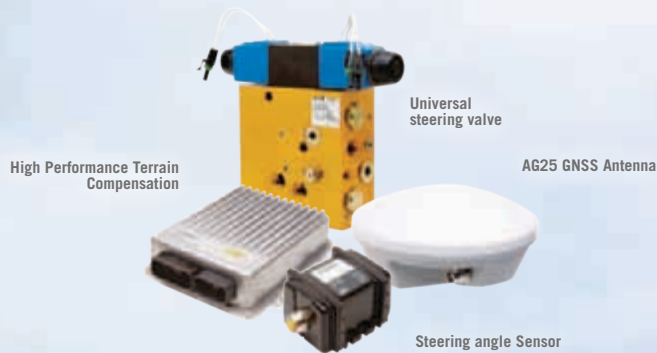
GET ON THE WINNING TRACK

PRECISE, EFFICIENT, AND PRODUCTIVE!

Enjoy being on the winning track with Case IH guidance systems. Reduce emissions and overlaps automatically, thus saving fuel and labour cost, and manage your input of seeds, fertilisers and chemicals more efficiently than ever before.

Benefit from inch-perfect precision and hands-free steering for consistently efficient and productive work processes – no matter how long your days in the field may be.

MAKE YOUR CHOICE:
FROM A FULLY AUTOMATIC SOLUTION
FOR OPTIMUM PERFORMANCE
TO AN ENTRY-LEVEL EZ-PILOT™



AUTOPILOT™

AUTOPILOT™ is the high-end fully automatic solution of Case IH steering systems which keep your machines and implements on a straight and repeatable path – again and again. The system can be retrofitted to any make and model of machine. Using the machine's electro-hydraulic circuit to provide automatic guidance, this steering system will significantly increase your performance and efficiency during field operations such as tillage, planting or harvesting – simply because you will be driving effortlessly with more accuracy than ever before – even during extended working hours and in darkness.

Antenna, Autosense™ Steering Sensor, Navigation Controller II and Vehicle Interface are the main components. Wheel angle information of the Steering Sensor is sent to the Navigation Controller II which in turn sends T3™ enhanced terrain compensated correction to the Vehicle Interface. The latter controls the vehicle's steering when engaged. T3™ enhanced terrain compensation technology can be used with FM-750™ and FM-1000™ displays and can be combined with TrueGuide, a passive system that lets the tractor guide the implement – ideal on hillsides, rolling terrain and with large implements that create draft.



EZ-Pilot™

EZ-PILOT™

As with the AUTOPILOT™, the EZ-PILOT™ can also be retrofitted to almost all tractors and combines, whatever make and model. When engaged, the EZ-PILOT turns the steering wheel with an integrated electric motor drive. Precise steering is available at speeds above 3km/h and maintained even in sloping and rolling landscapes, thus relieving the operator from tiring steering corrections.

The EZ-PILOT can be used together with your FM-750™ or FM-1000™ displays for hands-free field work. As the motor is integrated in the steering column, access to all instrument panels and your leg space are completely unobstructed. The system allows for unrestricted manual steering when not engaged. The EZ-PILOT is the ideal upgrade package to achieve high accuracy in your fields at an affordable price.

EZ-PILOT consists of the integrated electric motor drive and the EZ-PILOT Controller with T3™ enhanced terrain compensation technology. It is fully RTK compatible – for reliable and repeatable accuracy down to 2.5cm.



IMPLEMENT GUIDANCE SOLUTIONS ACCURATELY STEER YOUR IMPLEMENTS

FIELDLEVEL SYSTEM

The FieldLevel™ system streamlines the surveying, designing and levelling steps required when you plan land levelling projects. It also provides two methods for installing rice levees. FieldLevel helps you to ensure optimal water management by providing an efficient distribution of water by maintaining grade; it helps you to ensure improvements in yields by controlling excess water and it also helps to minimise water costs whilst improving the productivity of your farm.

LAND LEVELLING FUNCTIONALITIES INCLUDE:

Survey: Precisely map your fields and create boundaries, interior points and surfaces with ease. Calculate and report on the true acreage of your survey area – for optimal field coverage and accurate surface designs.

Design: Create a best-fit surface using Autoplane technology and define primary and cross slopes for prescribed orientation and grades. Multiplane design software will help you master more complex field requirements.

Level: Automatically operate the hydraulic valves on any type of tractor to steer and adjust the scraper when levelling your fields. You can operate both tandem and dual scraper systems to increase the productivity of your levelling projects.

AGGPS TRUETRACKER™ IMPLEMENT STEERING SYSTEM

By means of the AgGPS TrueTracker™ system, your implements will follow a repeatable path, even on sloping fields and variable soils.

- The system instantly adjusts implements such as tillage tools, strip tillers, drills, planters, cultivators, sprayers, harvesters and any other implement that can be mechanically steered, to follow directly in your tractor's path.
- If used with an RTK network provided by a Case IH dealer in your area, or if you set up an RTK base station on your farm to send corrected GPS positions to your tractor via radio AgGPS, TrueTracker will provide a +/- 2.5cm accuracy.
- Using the AgGPS TrueTracker helps to improve seedbed preparation and nutrient placement and thus will enhance your crop standards and yields.

AGGPS TRUEGUIDE™ IMPLEMENT STEERING SYSTEM

Whilst the TrueTracker system is the best solution for rolling landscapes and slopes, as tractor and implement will both be steered with repeatable 2.5cm precision, the AgGPS TrueGuide™ solution will do perfectly well on level fields. With the TrueGuide system, only the path of the tractor will be adjusted so as to keep the implement precisely on track.



APPLIED SOIL PROTECTION CONTROLLED TRAFFIC FARMING

NEXT LEVEL AGRICULTURE

Sustainable soil management and soil conservation are receiving growing attention throughout Europe and beyond. Controlled Traffic Farming as one of the successful strategies is increasingly looked at and taken up by farmers. In a first step, Controlled Traffic Farming (CTF) is based on in-field tracks which are laid out once and then are permanently used, thus leaving the soil surface between the tracks unaffected. Wheel tracks of the machines used for field work can be harmonised in a second step. Harmonised working widths and a high-precision guidance system are basic requirements for CTF.

CASE IH SOLUTIONS FOR A 12M PERMANENT TRACK SYSTEM

To enable farmers to take up and make best use of the benefits of Controlled Traffic Farming, Case IH engineers have particularly looked at the following components:

- Case IH RTK-systems for absolute precision and reliability in the 2.5cm range,
- the 12.4m header for our Axial-Flow® combines and
- an extra-long and foldable unloading auger for direct unloading into transfer vehicles which drive on the next permanent 12m track.

BENEFICIAL FOR YOUR SOILS AND YOUR CROPS

Once laid out and consequently maintained, permanent tracks will reduce the risk of soil compaction and cost for tillage, at the same time improving infiltration and storage of soil water. The soil structure will be enhanced, in turn promoting soil organisms and root growth, as well as nutrient and water uptake of your crops. There is scientific evidence that the reduction of the field surface that is passed by agricultural vehicles will allow for yield increases in the zones between the permanent tracks.



SHARE A “COMMON LANGUAGE”

CASE IH ISOBUS SOLUTIONS

Make life easier for you and you operators by using just one AFS™ touch-screen monitor to control all ISOBUS-compatible implements. As the more complex implements and steering mechanisms often require an ISOBUS-joystick, our vehicles are pre-wired and ready to “plug and play”. This enables you to deliberately and easily assign, store, select and use the functions of remote valves and implements according to their modes of operation.

ISOBUS TASK CONTROLLER

The ISOBUS Task Controller offers a number of advantages which make your field work easier and more efficient day after day:

- GPS based control of sections on ISO implements
- Variable rate applications with compatible ISOBUS implements
- Simple and complete documentation
- Control of compatible ISO implements from different manufacturers via a single, fully integrated terminal
- Increased productivity and time saving when changing from one implement to another
- Cost saving when buying new implements

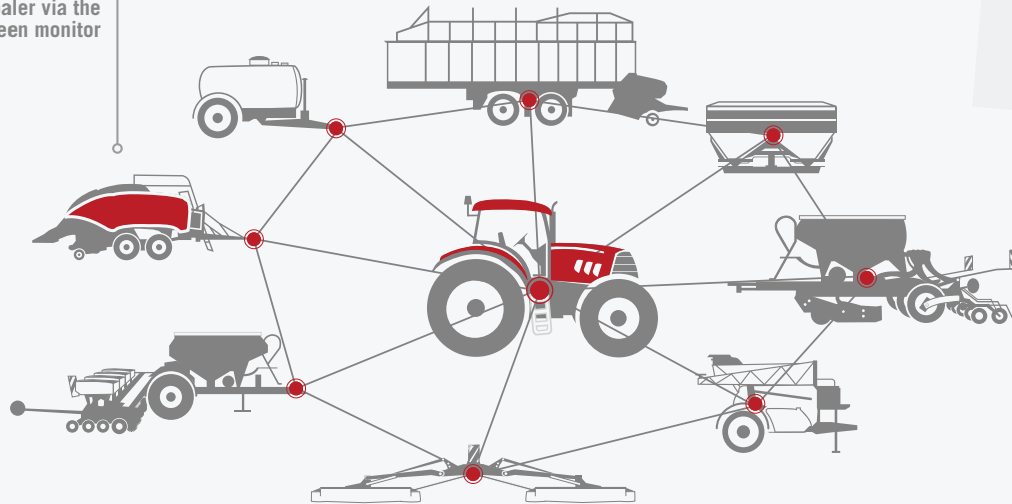
THE CASE IH SOLUTION INCLUDES:

- One display for tractor functions, ISOBUS and guidance
- Fully integrated AFS 300 or AFS 700 touch-screen display
- Quick and user-friendly implement control



ISOBUS TASK CONTROLLER FUNCTIONS

ISOBUS compatibility for very simple control of the large baler via the AFS™ touchscreen monitor



TC-BAS

TASK CONTROLLER BASIC

If you are interested in the documentation of cumulative values which provide useful information on the work you have done, the Task Controller Basic will deliver exactly what you are looking for. Data submitted by implements are documented in the ISO XML format and can easily be transferred between your electronic field book and your Task Controller. That makes importing tasks and exporting documentation of completed operations a matter of seconds.

TC-SC

TASK CONTROLLER SECTION

Automatically turning boom sections of sprayers and spreaders on and off in relation to actual GPS data and the overlap you desire, the Task Controller Section delivers far more than documentation. This feature is particularly useful for headlands or fields with irregular shapes. In addition to saving 5-10% of your inputs such as crop protection products and fertilisers, you may also benefit from a higher yield potential due to the targeted application that does not leave any bad spots.

TC-GEO

TASK CONTROLLER GEO-BASED

In addition to the features provided by Task Controller Section, the geo-based version of the Task Controller enables you to generate site-specific data. Sub-area specific applications can be planned, performed and documented on the basis of digital application maps. As with Task Controller Section, a GPS receiver must be connected to your Task Controller. ISOBUS allows for easy operation of your large baler – and any other ISOBUS-compatible implement – via your AFS touch-screen monitor.

ISOBUS: AN EASY WAY TO IMPROVE EFFICIENCY

Task Controller Section and Task Controller Geo-Based make it easy to save inputs and increase your efficiency. On the one hand, reaction time of the operator is replaced by automatic control, the latter never becoming tired even after long working hours. On the other hand, section control and in particular row control both reduce overlap by up to 75% and 100%, respectively.

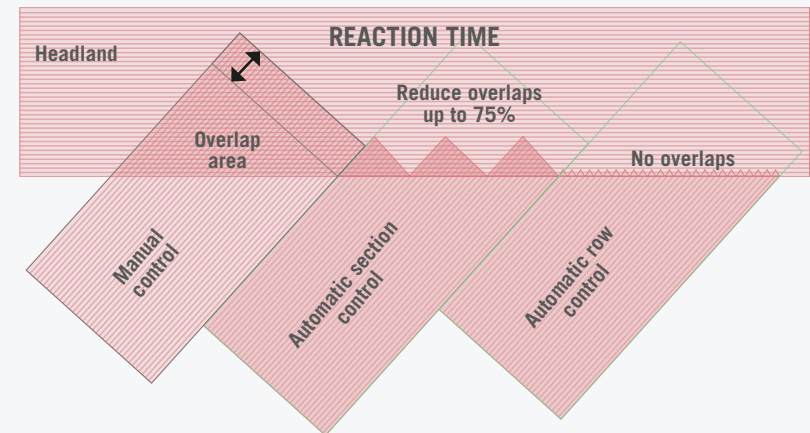
Automatic row control does not only help you to save fertilisers and crop protection products as positive effects already become visible during seeding. Further to reducing cost of seeds, you can also optimise your crop standards. Avoiding double density seeding in corners and along headlands will contribute to better crop growth and crop health.



Automatic row control.
Reduces your input costs for seeds and fertilizers.



With manual control you can't avoid double density seeding and spraying.



FIELD-IQ™ – AN INTELLIGENT WAY TO CUT YOUR FARM'S INPUT COSTS!

MOST PRECISE AND EASIEST GPS-DRIVEN SPRAYING

Field-IQ™ automatically turns up to 48 boom sections on and off to avoid overspray as well as untreated gaps and bad spots on end rows. This results in faster and more precise application during field work and less stress on the operator when navigating on headlands, along waterways and in other demanding driving situations.

FIELD_IQ™ CAB KIT



SPRAY, BROADCAST, DRILL

Just connect the Field-IQ™ system directly to the existing components of various manufacturers and get going – efficient, precise and reliable.

PREVENT OVERLAPS AND BAD SPOTS USING ROW CONTROL

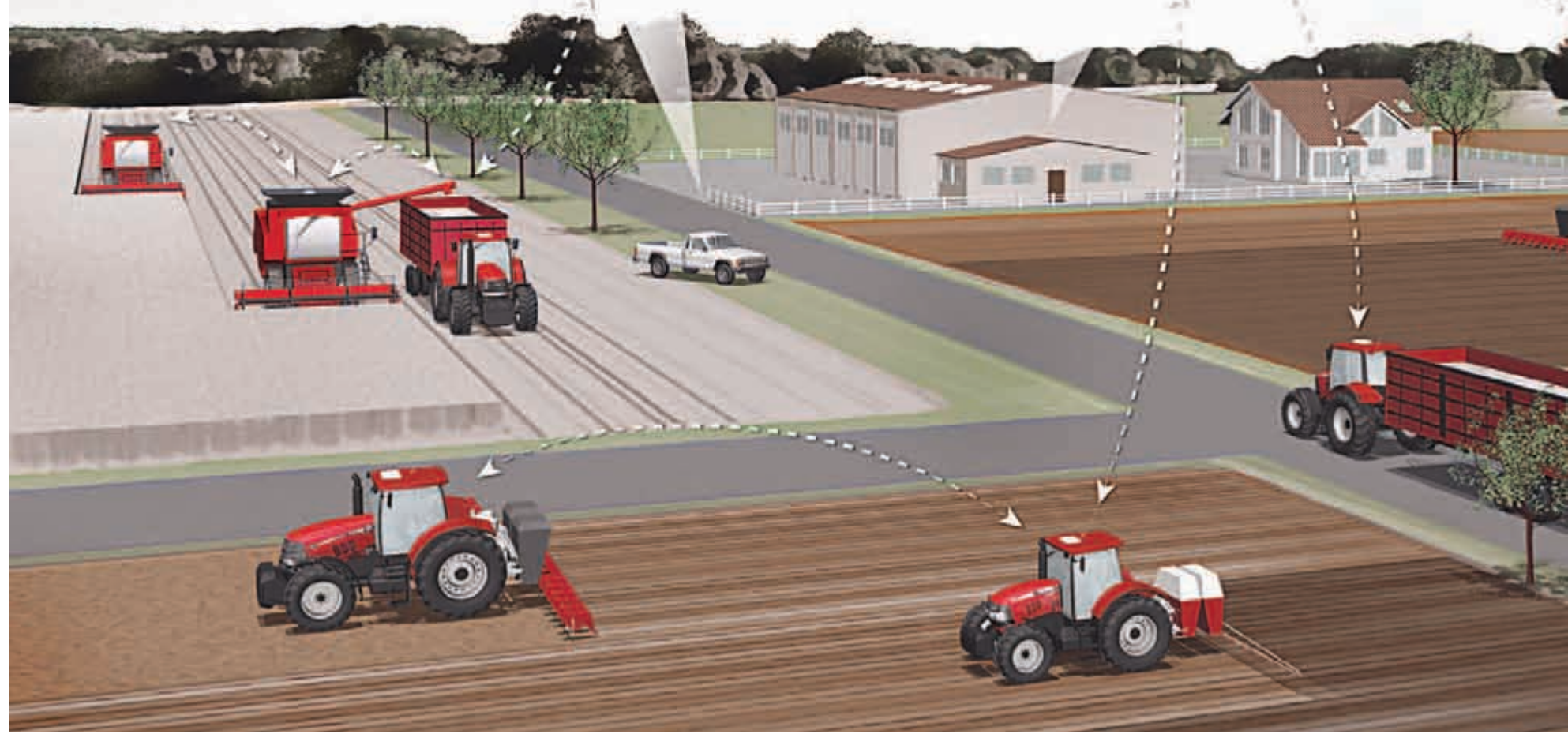
Control up to 48 individual sections, nozzles or rows on demand. The system directly operates the shut-off valves located on the implement boom.

OPTIONAL FIELD_IQ™ SWITCH BOX



VARIABLE METERING CONTROL WITH OPTIONAL FIELD-IQ™ SWITCH BOX

In addition to controlling individual nozzles, the optional Switch Box allows you to increase and decrease application rates and also adjust your rate manually to a predefined rate over different field areas. Save money, increase yield and generate documentation on the amount of fertilisers or crop protection products used.





MONITOR PERFORMANCE, MAXIMIZE UPTIME INCREASE INCOME

Case IH AFS Connect™ telematics uses global positioning systems and mobile communication technology to send and receive machine, agronomic and job-site information. Telematics technology allows you to know more on the whereabouts, status and settings of your machines, even from your office desk, thus helping to improve the productivity of your business with up-to-the-minute information. Case IH AFS Connect telematics is “the clever way” to maximise your return on investment.

BE MASTER OF YOUR FLEET

Fleet management allows you to track all of your machines and, by extension, your team, from a single web page. You can:

- Accurately pinpoint the exact location of a given machine.
- Coordinate machine logistics Basic so you can efficiently support your staff, manage maintenance, refuelling and other needs to keep your people productive and your machines running smoothly.

SECURITY AND ASSET TRACKING

Protect your investment and streamline maintenance by using the AFS Connect Basic alerts and anti-theft system (where available).

Geo-fencing ensures that your machine stays within certain coordinates preset by you, and curfew management sends an alert if a machine is started after working hours.

COMPATIBILITY

The Case IH AFS Connect Basic is compatible with your existing precision farming systems, so your local Case IH dealer can retrofit it on fleets of both Case IH and competitive equipment. Deploy it with:

- Any equipment using the standard ISOBUS protocol.
- Case IH AFS Pro displays.
- A Case IH DCM-300 modem that you may already own for mobile communication-based differential correction.

DIAGNOSIS AND DEALER SERVICE VIA MOBILE COMMUNICATION

There is no need to take your Case IH AFS Connect Basic to your dealer for diagnosis or support as the system can be serviced via mobile communication units based on Android and IOS systems software.



AFS CONNECT™ ANALYSE PERFORMANCE IN REAL-TIME

Telematics data provided by AFS Connect™ are transferred to your farm computer in real-time, enabling you to provide instant advice and directions whenever you see the need to make immediate operating adjustments. For different demands and personal preferences, Case IH AFS Connect is available in two specification levels:

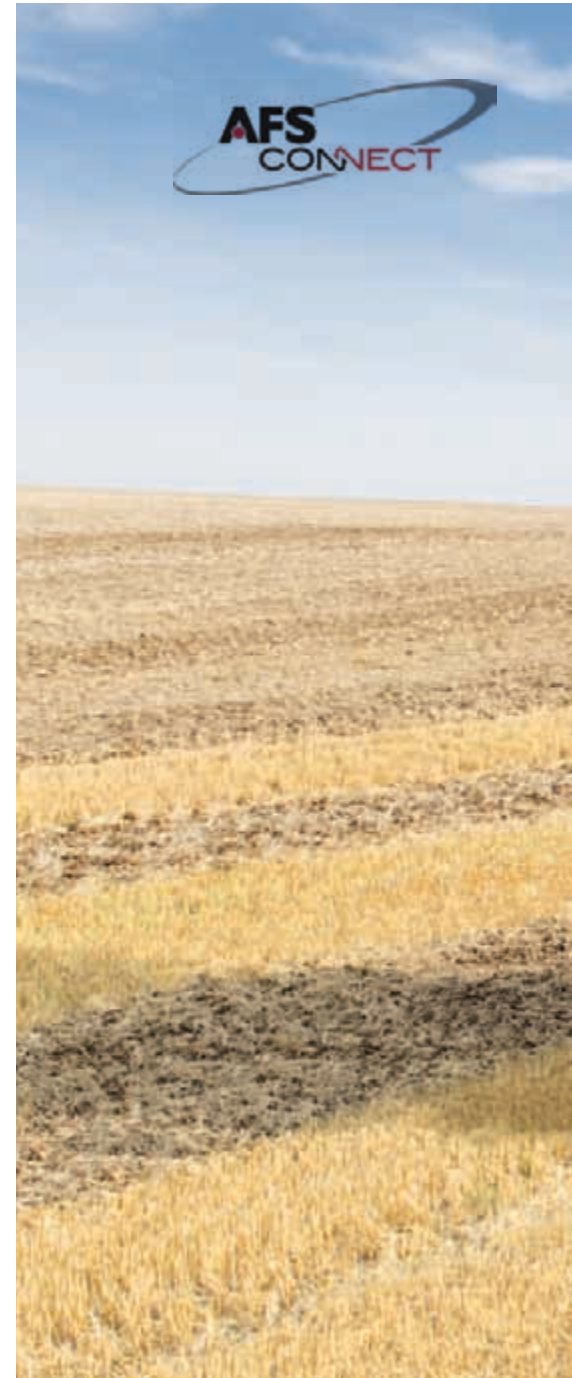
The AFS Connect Basic offers fleet management capabilities, machine location tracking and a working status overview. Knowing exactly where your tractor or combine is – in which field and in which part of that field – allows you to guide trailers or fuel supplies exactly to the right spot. No time is wasted whilst the efficiency of man and machine is kept at their maximum. With the AFS Connect Manager, you can be alerted when your machine leaves a designated area. In addition to security benefits, this also allows you to guide operators to preferred routes and instructed areas – particularly helpful for inexperienced staff or contract services.

The AFS Connect Advanced package includes all the features and abilities of the AFS Connect Basic plus various other helpful management and analysis possibilities:

- Compare data from different machines and identify areas of possible improvement where one machine is performing better than another.
- Having operating data instantly at hand, as well as access to performance and set-up figures from previous working periods for the same or similar machines, provides aid for new or inexperienced operators and enables them to quickly increase their efficiency.
- AFS Connect messaging allows farm owners and managers, as well as Case IH dealer technicians, to send advice directly to the machine's display – so operators can improve their performance on the move.

ACCURATE MEASUREMENT, ASTUTE MANAGEMENT

If you can't measure, you can't manage. With Case IH AFS Connect, all operating figures from your key machines are at your fingertips, enabling you to make your management decisions on the basis of accurate data. AFS Connect allows for the analysis and reduction of machine idle operating hours or unloading times, thus enabling you to minimise fuel consumption and maximise performance for optimum productivity. Data on engine power, fuel use, productivity and output are also recorded and transferred in report format directly to the computer on your farm desk. These reports can be exported in Microsoft Excel format, and the information can be filtered by field, operator or task. Statistic work reports for all relevant machines and their operators allow for comparisons of performance and efficiency, thus providing clear starting points for potential improvements.





AFS CONNECT™ BASIC FEATURES

- **Fleet Management**, including vehicle mapping, historic breadcrumbing.
- **Machine Monitoring**, including geofence/curfew settings, motion detection for the last five days after last key-off.
- **Maintenance**, including maintenance-due alerts.
- **One-Minute Update Rate**, or when status change occurs including reporting of key on/off, idle time and workload.
- **Machine Status**, including reporting of traveling, engine hours, moving, working and moving, moving and unloading, unloading and working, unloading and moving, unloading.
- **Dashboard Graphic Interface** of key vehicle parameters on supported platforms, such as engine speed and oil temperature, coolant temperature and level, hydraulic oil temperature and pressure, fuel level, DEF level, battery voltage.
- **Live Time** provides 30 minutes on the dashboard.

AFS CONNECT™ ADVANCED FEATURES

- **CAN Viewer** lets you watch machine parameters remotely in real time.
- **2-Way Messaging** from the web portal to the vehicle, with a predefined set of potential operator responses.
- **Graphic Reports** showing area worked, yield average, flow average, moisture average, weight, fuel level.
- **Live Time** provides 30 additional minutes through the CAN Viewer which gives you a deeper dive into machine performance data – per modem, per day, not pooled in any way.
- **Cellular Network Coverage**, with multiple providers per country for best coverage. Roaming SIM Card and data plan included in AFS Connect subscription works global.



AFS DESKTOP SOFTWARE YOUR BUSINESS AT A GLANCE

Many variables apply in farming, thus making it key to understand what is happening and why. Although such understanding has always been important, today's challenges are more demanding, requiring a profound knowledge and a complete overview at all times. Manage your farming operation on a new level of expertise by making decisions based on solid facts. With the AFS™ Farm Management software package from Case IH you can see field by field the tasks performed, the work rates achieved, the fuel used during each task and, most importantly, your yield. Start collecting the data for your future today.

AFS FARM MANAGEMENT SOFTWARE

Get real-time information on all your farming processes. Use a single software suite to maximise the value of your AFS technology. Case IH AFS Software enables you to view, edit, manage, analyse and utilise your precision farming data. Designed to fit your operation's needs, Case IH AFS Software offers the flexibility and analysis power to support all your precision farming needs – without creating a “data overload”.

Generate yield maps, prescription maps and other management support tools according to your needs from just one integrated software package. Plus, create soil sampling maps, create and print reports, and import satellite imagery. No matter what your data source, the AFS™ Pro 700 display, your crop consultant, an ag retailer or any other supplier, you can easily import and manage the data using your AFS Software.

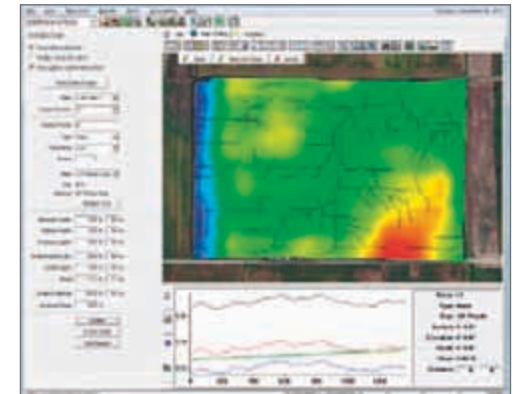
IMPROVED IN-FIELD TRACK MANAGEMENT

With the AFS Farm Management Software, you can easily administer and even change all in-field tracks, and then transfer them back onto your AFS Pro 300/700, FM-750™ or FM-1000™ display. This enables all vehicles of your fleet to use exactly the same tracks in a given season and to return to those tracks with 2.5cm accuracy in the years to follow – at any growth stage of your crop and at any time of the year.

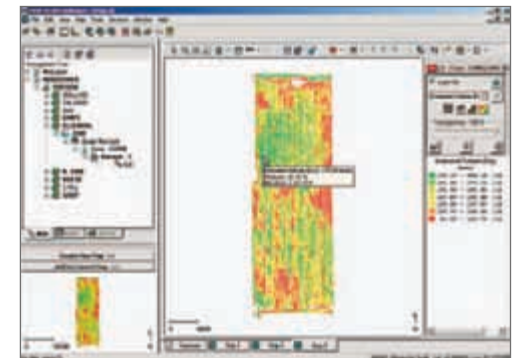
COMPREHENSIVE MANAGEMENT TOOLS AND A WHOLE RANGE OF SOLUTIONS – FROM JUST ONE SOURCE

Case IH Farm Management Software is far more than a collection of data: It is a collection of effective tools for the administration, evaluation and adaptation of data for your electronic field books that have been generated by your AFS equipment, as well as data derived from other precision agriculture sources. Organise all your data with just one software which also enables you to prepare and print maps, reports or graphs. If you wish to do so, you can easily exchange these maps or reports with other parties such as land owners and advisors.

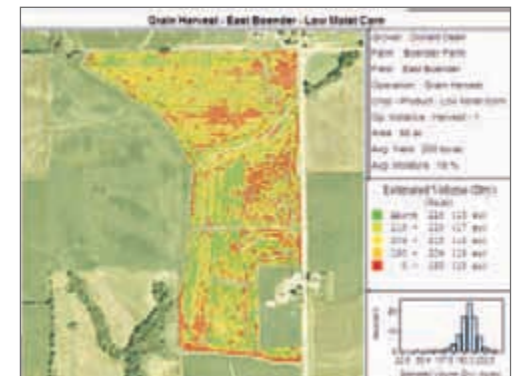
This software also supports all major precision farming systems available on the market, such as Trimble, Ag Leader and Green Star.



AFS Water Control: Identify optimal placement of tile and surface drains with AFS Water Control.



AFS View: View and track data with AFS View.



AFS Mapping & Records: Optimise field record-keeping, mapping and analysis with AFS Mapping & Records.



AFS SUPPORT CENTER

0800 0281 910
afssupporteur@caseih.com

CASE IH
AGRICULTURE

AFS ACADEMY & AFS SUPPORT DEDICATED TO KEEP YOU ROLLING

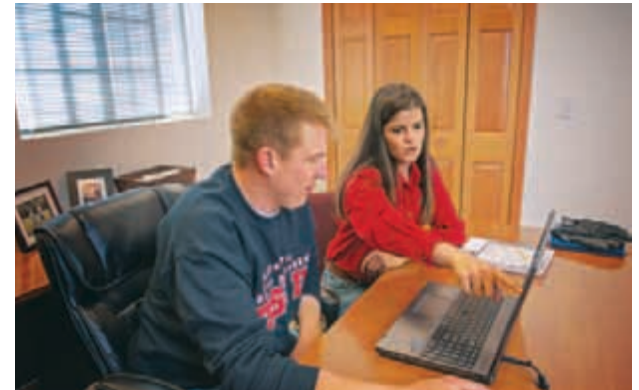
You want to be ready before you head out to the field; with AFS Academy you will have the training you need to get the most from your equipment and AFS technology. Highly trained support engineers understand your equipment: they participate in hardware and software installations, they operate AFS-equipped tractors, combines and implements on the Technology Centre's test track, and they are just footsteps away from Case IH product engineers. At Case IH, it is innovations such as the set-up of our AFS Support Centre which will help you maximise your technology's potential.

AFS ACADEMY: UTILISE AFS FUNCTIONALITY TO ITS BEST

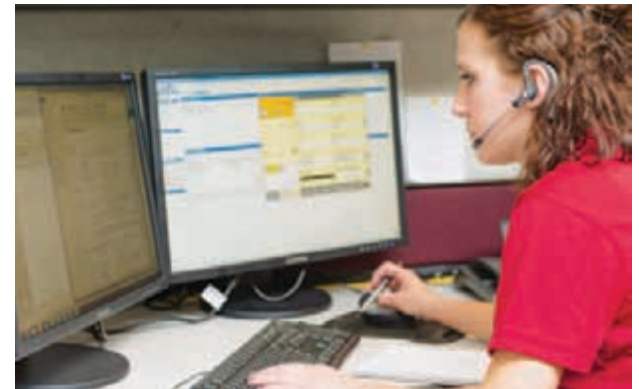
AFS Academy is available in three convenient formats to fit your needs: online, at your local dealership or through intensive regional training sessions. You have made an investment in AFS technology, so Case IH wants to make sure that you are in a position to make the best use of its full potential and optimise your profitability. Your local AFS certified dealer can schedule instructor-led training sessions on-site, where you can benefit from the experience of your dealer's AFS specialist and expert AFS trainers. You can participate in hands-on, comprehensive, high quality training in small, intimate settings for a dynamic and lasting learning experience. Intensive, regional, instructor-led training sessions focus on theoretical and practical applications of the course content. Attendees can learn more about AFS AccuGuide™ autoguidance, AFS RowGuide™ for combines, application control and more. These practical training sessions give you and your colleagues the opportunity to ask questions and work through solutions.

AFS SUPPORT – SHARED KNOWLEDGE AVAILABLE BY PHONE

Many things in your life will not respect regular opening hours between 9 in the morning and 5 in the afternoon. That is why Case IH provides 24/7/365 technical support – with the right people when and where you need them – to help keep you on track and rolling. Calls to the Support Centre are logged and categorised so all AFS support engineers have access to the inquiry and the resolution. This shared knowledge helps us to provide faster and more accurate responses. In addition, the real-time data on product issues, trends and analyses give Case IH important insights for future product improvements and innovations.



AFS Academy: Free online tutorials and web-based classes.



AFS Support: Available by phone or...



...even in the field when you need it.





SYSTEM SOLUTIONS

When you buy a Case IH machine, you can be sure not only that you're buying the best product, but also that you've got the best dealer back-up behind you. Case IH dealers can offer advice on selecting and financing the right machine, will ensure they deliver what you need when you need it, and will then continue to back you and your equipment with the service and spare parts supply you would expect from a name as trusted as Case IH.



ALL THE PARTS AND SERVICE TO KEEP YOUR EQUIPMENT RUNNING

Find the full line of Case IH parts and components at your local dealer. Plus full-service maintenance programmes and industry-leading warranties. It's expertise applied by skilled, factory-trained service professionals committed to providing you maximum uptime, season after season.



AROUND THE COUNTRY

Case IH Max Service is a customer support service that provides 24-hour, seven-day-a-week access to the people, products and parts support needed to keep your operation running during the times most critical to your profitability. Max Service backs up your dealer with every resource available to Case IH, to help maximise uptime and productivity of Case IH equipment and increase your return on investment through access to product experts and 24/7 emergency breakdown assistance.



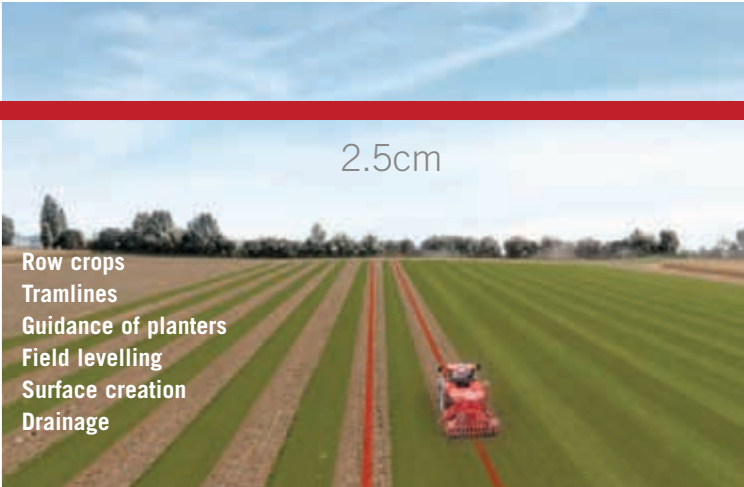


OFFERING FINANCIAL SOLUTIONS FOR MORE THAN 50 YEARS

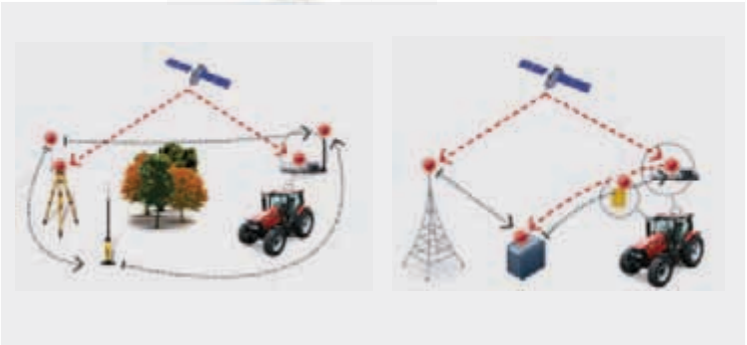
CNH Industrial Capital's extensive experience in the agricultural industry has created a deep understanding of your unique needs. Competitive equipment financing with flexible payments can reduce upfront payments with operating and finance leases. For other needs, choose from credit cards specific to the agricultural industry. We can even help you finance crop-input products or land rental. There are financing options that fit the way you farm. CNH Industrial Capital helps you find them.



VISIT OUR FANSHOP AT
WWW.CASEIH.COM

CHOOSE YOUR ACCURACY


EGNOS	RTX RANGE POINT	RTX CENTER POINT	RTK	RTK-NET
+/- 20cm	+/-15cm	4cm	2.5cm	
<p>Entry level for large scale crops</p> <p>Soil tillage</p> <p>Stubble cultivation</p> <p>Mapping</p>	<p>Mapping</p> <p>Soil sampling</p> <p>Planting/Seeding</p> <p>Row crops</p>	<p>Row crops</p> <p>Planting/Seeding</p> <p>Spraying</p> <p>Harvest</p>	 <p>Row crops</p> <p>Tramlines</p> <p>Guidance of planters</p> <p>Field levelling</p> <p>Surface creation</p> <p>Drainage</p>	
<ul style="list-style-type: none"> • 20cm pass-to-pass accuracy • For manual guidance systems • GPS-satellite 	<ul style="list-style-type: none"> • 15cm pass-to-pass accuracy • Exclusively available for Trimble-receivers • Fast convergence times • 2 min. bridging timeout • GLONASS free of charge 	<ul style="list-style-type: none"> • 4cm pass-to-pass accuracy • Quick new-start technology • Repeatable • 2 min. bridging timeout • GLONASS free of charge 	<ul style="list-style-type: none"> • 2.5cm pass-to-pass accuracy • Radio-based correction signal • Optional repeater • X-Fill technology 	<ul style="list-style-type: none"> • 2.5cm pass-to-pass accuracy • Correction via mobile phone network • 30km range • X-Fill technology
			 <p>AFS 372 receiver</p>	 <p>3-G mobile modem</p>



GUIDANCE SYSTEMS

	MANUAL STEERING	ASSISTED STEERING		AUTOMATIC STEERING	
	EZ-GUIDE 250	EZ-PILOT		AUTOPILOT	ACCUGUIDE
					
	EZ-Guide 250	XCN-2050	FM 750 / FM 1000		AFS 700
EGNOS 20cm	manual				
Range Point RTX 15cm		assisted with		automatic	
Center Point RTX 4cm	×	T3™ terrain compensation technology		with T3™ terrain compensation technology	
RTK 2.5cm					
Case IH <i>factory fitted</i>	×	×	×	×	Maxxum CVX Puma, Puma CVX Magnum, Magnum CVX Steiger / Quadtrac Axial-Flow®
Case IH <i>dealer installed accessory</i>	✓	✓	✓	✓	
<i>Dealer installed accessory competitors</i>	✓	✓	✓	✓	×



 Safety never hurts! Always read the Operator's Manual before working with any equipment. Inspect equipment before using it, and be sure it is operating properly. Follow the product safety signs, and use any safety features provided. This literature has been published for worldwide circulation. The standard and optional equipment and the availability of individual models may vary from one country to the next. Case IH reserves the right to undertake modifications without prior notice to the design and technical equipment at all times without this resulting in any obligation whatsoever to make such modifications to units already sold. Whilst every effort is made to ensure that the specifications, descriptions and illustrations in this brochure are correct at the time of going to press, these are also subject to change without prior notice. Illustrations may show optional equipment or may not show all standard equipment. Case IH recommends **AKCELA** lubricants.

CNH Industrial UK Ltd., Cranes Farm Road, Basildon, Essex SS14 3AD
© 2014 CASE IH - www.caseih.com - AFS-UK-BR - Free phone 00800 22 73 44 00- Printed in Italy - 10/14 - TP01 - Cod. 13C8003/INB

www.caseih.com